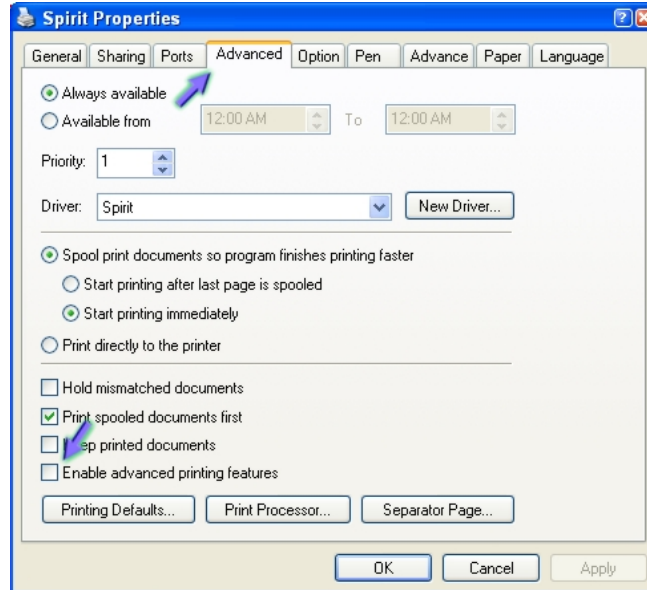
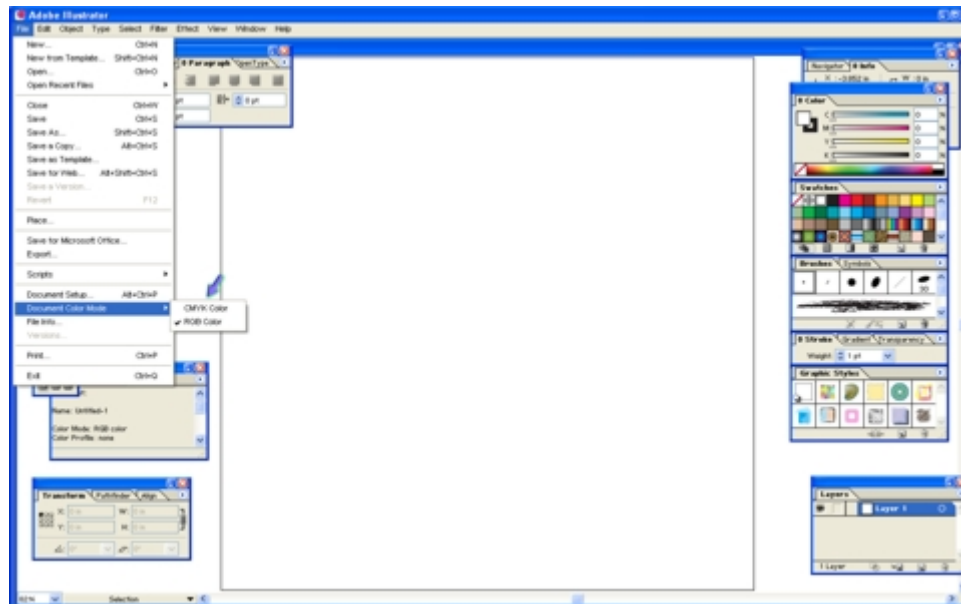


Cutting with AI

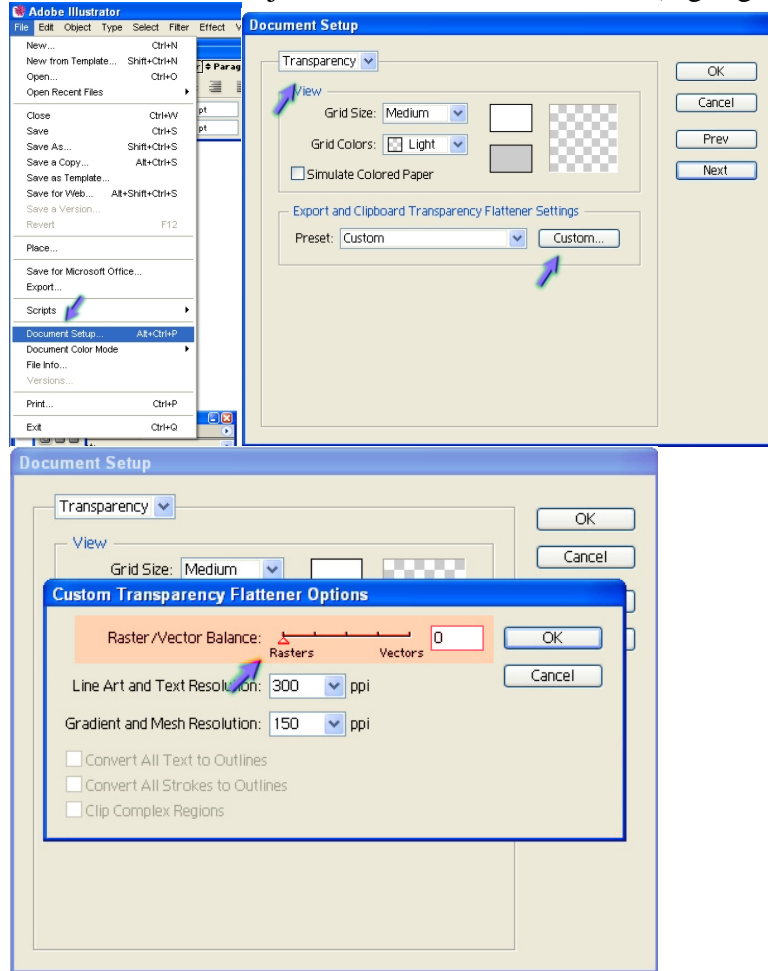
1. In the print driver under the first advanced tab “enable advanced printing features” must **not** be checked.



2. Adobe Illustrator should have document color mode set to RGB.



3. Set raster/vector slider to vector side. Go to Document setup->Transparency->Custom. Do not adjust the Raster/Vector Balance (highlighted in red).



4. Please be sure to add stroke weight to your design of .001

